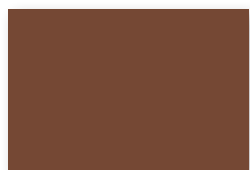
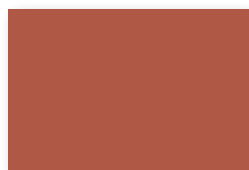


**Core Colors**



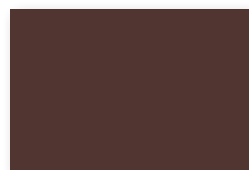
**Colonial Red\*<sup>Δ</sup>**  
SR: .34 IE: .86 SRI: 35



**Terra Cotta\*<sup>Δ</sup>**  
SR: .39 IE: .84 SRI: 41



**Banner Red\*<sup>Δ</sup>**  
SR: .42 IE: .84 SRI: 45



**Brandywine\***  
SR: .26 IE: .85 SRI: 24



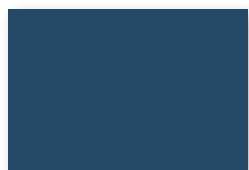
**Patina Green\*<sup>Δ</sup>**  
SR: .29 IE: .87 SRI: 29



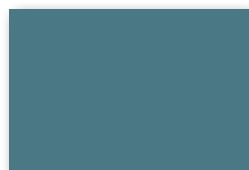
**Classic Green\***  
SR: .26 IE: .84 SRI: 24



**Hartford Green**  
SR: .10 IE: .82 SRI: 2



**Regal Blue\***  
SR: .28 IE: .86 SRI: 27



**Slate Blue\***  
SR: .26 IE: .85 SRI: 24



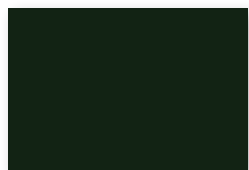
**Stone Gray\*<sup>Δ</sup>**  
SR: .36 IE: .84 SRI: 37



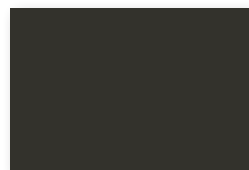
**Slate Gray\*<sup>Δ</sup>**  
SR: .37 IE: .86 SRI: 39



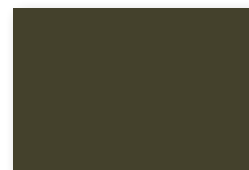
**Charcoal\*<sup>Δ</sup>**  
SR: .32 IE: .85 SRI: 32



**Matte Black\***  
SR: .27 IE: .86 SRI: 26



**Dark Bronze\***  
SR: .26 IE: .84 SRI: 24



**Mansard Brown\*<sup>Δ</sup>**  
SR: .29 IE: .86 SRI: 29



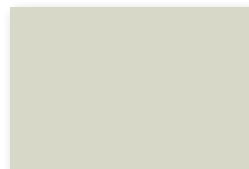
**Medium Bronze\*<sup>Δ</sup>**  
SR: .30 IE: .87 SRI: 31



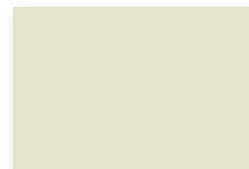
**Sierra Tan\*<sup>Δ</sup>**  
SR: .35 IE: .86 SRI: 37



**Surrey Beige\*<sup>Δ</sup>**  
SR: .40 IE: .86 SRI: 43



**Sandstone\*<sup>Δ</sup>**  
SR: .54 IE: .86 SRI: 63



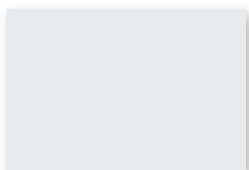
**Almond\*<sup>Δ</sup>**  
SR: .63 IE: .86 SRI: 75



**Bone White\*<sup>□</sup>**  
SR: .72 IE: .84 SRI: 87



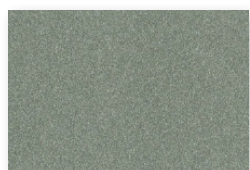
**Regal White\*<sup>□</sup>**  
SR: .68 IE: .86 SRI: 82



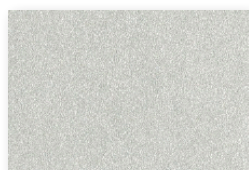
**Stone White\*<sup>Δ</sup>**  
SR: .61 IE: .85 SRI: 72

SR = Solar Reflectivity  
IE = Initial Emissivity  
SRI = Solar Reflective Index

**Metallic Colors<sup>†</sup>**



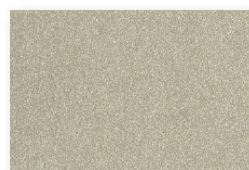
**Pewter\*<sup>Δ</sup>**  
SR: .36 IE: .85 SRI: 38



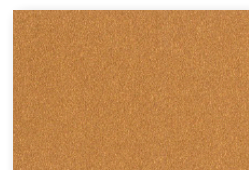
**Bright Silver\*<sup>Δ</sup>**  
SR: .60 IE: .77 SRI: 68



**Silversmith<sup>Δ</sup>**  
SR: .53 IE: .78 SRI: 59



**Champagne\*<sup>Δ</sup>**  
SR: .37 IE: .83 SRI: 38



**Bright Copper\*<sup>Δ</sup>**  
SR: .49 IE: .85 SRI: 55

<sup>†</sup> Featuring a pearlescent appearance mica finish; subject to premium pricing.  
Colors shown are as close to actual colors as allowed by the printing process. Actual metal samples are available.  
Colors may appear different when viewed at different angles and under different lighting conditions.  
Due to product improvements, changes and other factors, we reserve the right to change or delete information herein without prior notice.



\* ENERGY STAR<sup>®</sup> approved.  
□ LEED<sup>®</sup> compliant.  
Δ LEED<sup>®</sup> compliant for steep slope only.

FABRAL COLOR	SR	IE	SRI	STEEL			ALUMINUM			
				24GA.†	22GA.‡	18GA.‡	.032"†	.040"†	.050"†	.063"†
Regal White	.68	.86	82	●■▲◆	●	●	●■			●
Bone White	.72	.84	87	●	●	●	●	●	●	
Almond	.63	.86	75	●			●	●		
Sandstone	.54	.86	63	●■▲◆	●		●	●	●	
Surrey Beige	.40	.86	43	●◆	●		●	●	●	
Sierra Tan	.35	.86	37	●			●	●		
Medium Bronze	.30	.87	31	●■◆	●	●	●	●	●	●
Mansard Brown	.29	.86	29	●			●	●	●	
Dark Bronze	.26	.84	24	●■▲◆	●	●	●■	●	●	●
Matte Black	.27	.86	26	●	●		●	●		
Stone Gray	.36	.84	37	●			●			
Slate Gray	.37	.86	39	●◆			●	●		
Charcoal	.32	.85	32	●	●		●	●		
Slate Blue	.26	.85	24	●			●			
Regal Blue	.28	.86	27	●			●			
Patina Green	.29	.87	29	●			●			
Classic Green	.26	.84	24	●■	●		●	●		
Hartford Green	.10	.82	2	●			●			
Brandywine	.26	.85	24	●			●			
Banner Red	.42	.84	45	●						
Colonial Red	.34	.86	35	●			●			
Terra Cotta	.39	.84	41	●						
Pewter	.36	.85	38	●			●			
Bright Silver	.60	.77	68	●			●■			
Silversmith	.53	.78	59	●			●			
Champagne	.37	.83	38	●			●			
Bright Copper	.49	.85	55	●■			●■			
Stone White	.61	.85	72	●				●		

PAINT PERFORMANCE PROPERTIES	HOT DIPPED GALVANIZED STEEL OR GALVALUME®	ALUMINUM
<b>Accelerated Weathering</b> ASTM D 4587 (Drew Cycle Weatherometer)	Hours: 3,000 Total Chalk: Rating 8 Color: 5 Δ E Hunter units max	Hours: 3,000 Total Chalk: Rating 8 Color: 5 Δ E Hunter units max
ASTM G 23	Hours: 5,000 Total Chalk: Rating 8 Color: 5 Δ E Hunter units max	Hours: 5,000 Total Chalk: Rating 8 Color: 5 Δ E Hunter units max
<b>Salt Spray</b> ASTM B 117	Hours: 1,000 Total Scribe: Rating 7 1/16" (1.6mm) Field: Rating 10, no blisters	Hours: 3,000 Total Scribe: Rating 10, no creepage Field: Rating 10, no blisters
<b>Humidity</b> ASTM D 2247	Hours: 2,000 Total Rating: 10, no blisters	Hours: 3,000 Total Rating: 10, no blisters
<b>Formability</b> ASTM D 4145	0T-3T	0T-3T
<b>ASTM D 522</b> (Elongation over 1/8" mandrel)	No cracking No loss of adhesion	No cracking No loss of adhesion
<b>Pencil Hardness</b> ASTM D 3363	HB-2H	HB-2H
<b>Abrasion Resistance</b> ASTM D 968	55-75 Liters of falling sand	55-75 Liters of falling sand
<b>Specular Gloss</b> ASTM D 523	20-35 at 60°	20-35 at 60°
<b>Reverse Impact</b> ASTM D 2794	2 x Metal thickness in inch-lbs. No loss of adhesion	1 1/2 x Metal thickness in inch-lbs. No loss of adhesion
<b>Flame Test</b> ASTM E 84	Class A rated coating	Class A rated coating

† Standard Coil Width is 48.25"  
‡ Standard Coil Width is 44.375"  
● Available in Standard Coil Width.  
■ Available in 40.25" Coil Width.  
▲ Available in 38" Coil Width.  
◆ Available in 44.375" Coil Width.



**Notes on availability:**

- 24ga, .032", .040", .050" & .063" are standard 48.25" in width, 22ga & 18ga are 44.375" in width for painted items.
- Standard inventory is non-embossed. Please contact us for the availability of stucco embossing.
- Protective strippable film is available upon request.
- Metallic/Mica colors are subject to premium pricing.
- Subject to change without notice.
- Unpainted, acrylic coated, Aluminum-Zinc Alloy steel (AZ-55) is maintained in: 26ga x 20", 26ga x 28", 26ga x 48.25", 24ga x 20", 24ga x 24", 24ga x 28", 24ga x 48.25", 22ga x 44.375", 22ga x 48.25", 20ga x 44.375" and 18ga x 44.375".
- All colors are supplied in Medium Gloss (20-35 at 60°). Low Gloss available subject to minimum coating run.

SentriClad's standard architectural colors and finishes feature 70% polyvinylidene fluoride (PVDF) resin paint systems to ensure long term color retention and performance. Custom colors and finishes are also available. Minimum quantities and set up charges may apply. Consult [www.sentrigrad.com](http://www.sentrigrad.com) for additional information.

